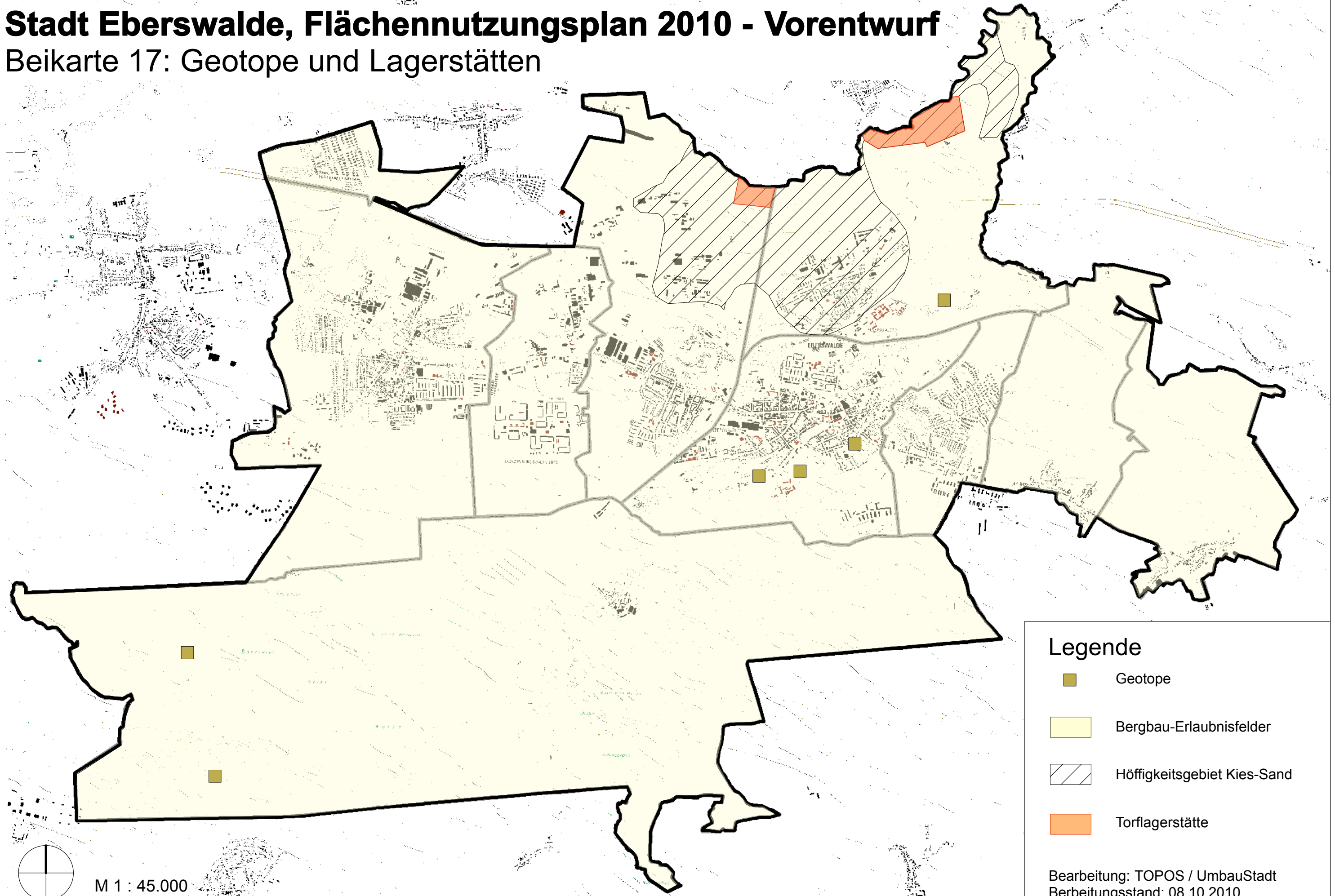

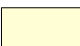




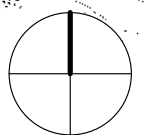
# Stadt Eberswalde, Flächennutzungsplan 2010 - Vorentwurf

## Beikarte 17: Geotope und Lagerstätten



### Legende

-  Geotope
-  Bergbau-Erlaubnisfelder
-  Höffigkeitsgebiet Kies-Sand
-  Torflagerstätte



M 1 : 45.000

Bearbeitung: TOPOS / UmbauStadt  
Berbeitungsstand: 08.10.2010