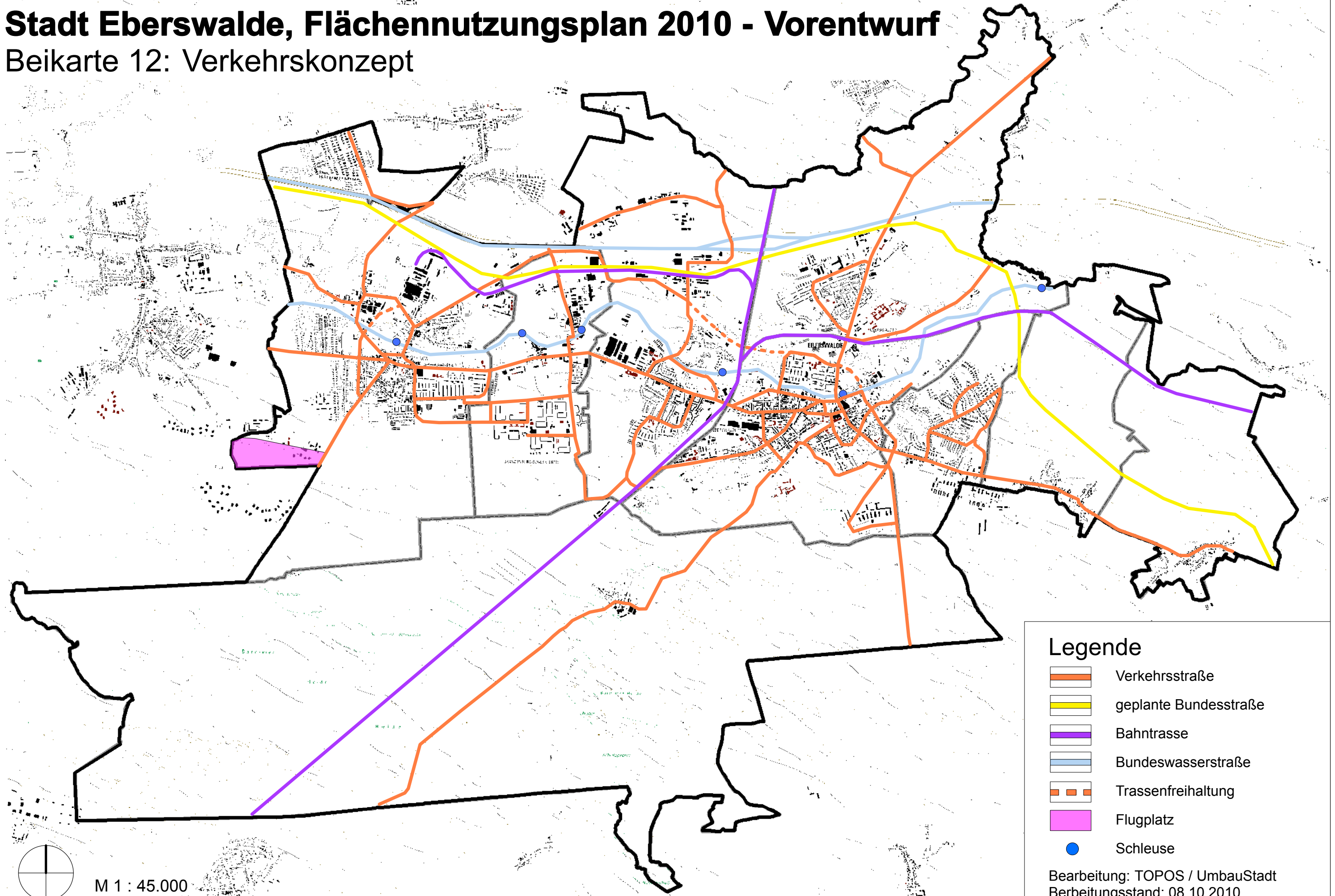

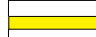







Stadt Eberswalde, Flächennutzungsplan 2010 - Vorentwurf

Beikarte 12: Verkehrskonzept



Legende

-  Verkehrsstraße
-  geplante Bundesstraße
-  Bahntrasse
-  Bundeswasserstraße
-  Trassenfreihaltung
-  Flugplatz
-  Schleuse

Bearbeitung: TOPOS / UmbauStadt
Berbeitungsstand: 08.10.2010

M 1 : 45.000