

STADTMITTE
I.1 Eberswalde-Zentrum
I.2 Schwärzelal
I.3 Eberswalde-Süd
I.4 Eichwerder
I.5 Schleusenstraße
I.6 Leibnizviertel
I.7 Eisenbahnstraße

OSTEND
II.1 Ostend
II.2 Waldstraße
II.3 Mülldeponie

NORDEND
III.1 Nordend
III.2 Dr. Gillwald-Höhe
III.3 Stadtsee

WESTEND
IV.1 Westend
IV.2 Kupferhammer
IV.3 Britzer Straße
IV.4 TGE

FINOWTAL
V.1 Brandenburgisches Viertel
V.2 Eisenpaltrei
V.3 Coppstraße

FINOW
VI.1 Finow-Zentrum
VI.2 Finow-Ost
VI.3 Messingwerk
VI.4 Mäckersee
VI.5 Angermünder Straße
VI.6 Flugplatz
VI.7 Finow-West

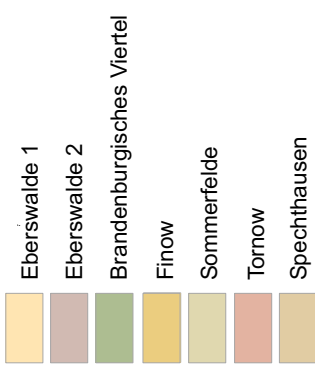
CLARA-ZETKIN-SIEDLUNG
VII.1 Siedlung-West
VII.2 Siedlung Ost

SOMMERFELDE
VIII.1 Sommerfelde-Dorf
VIII.2 Sommerfelde-Land

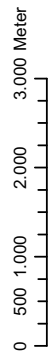
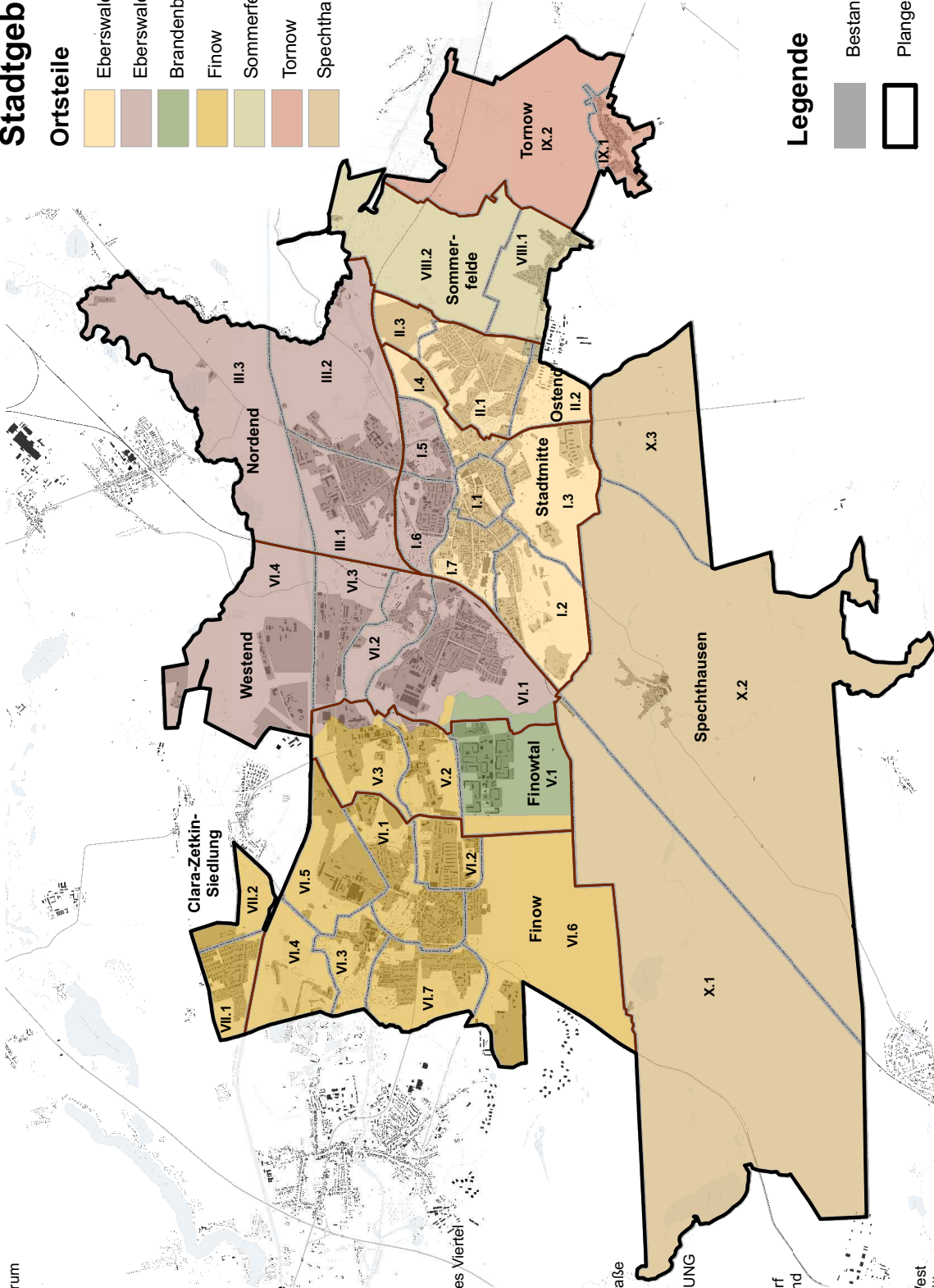
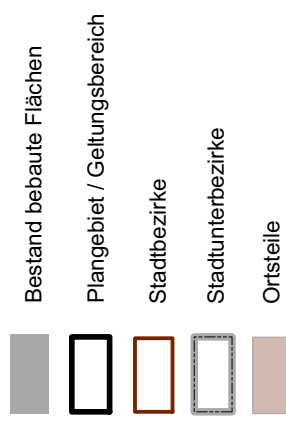
TORNOW
IX.1 Tornow-Dorf
IX.2 Tornow-Land

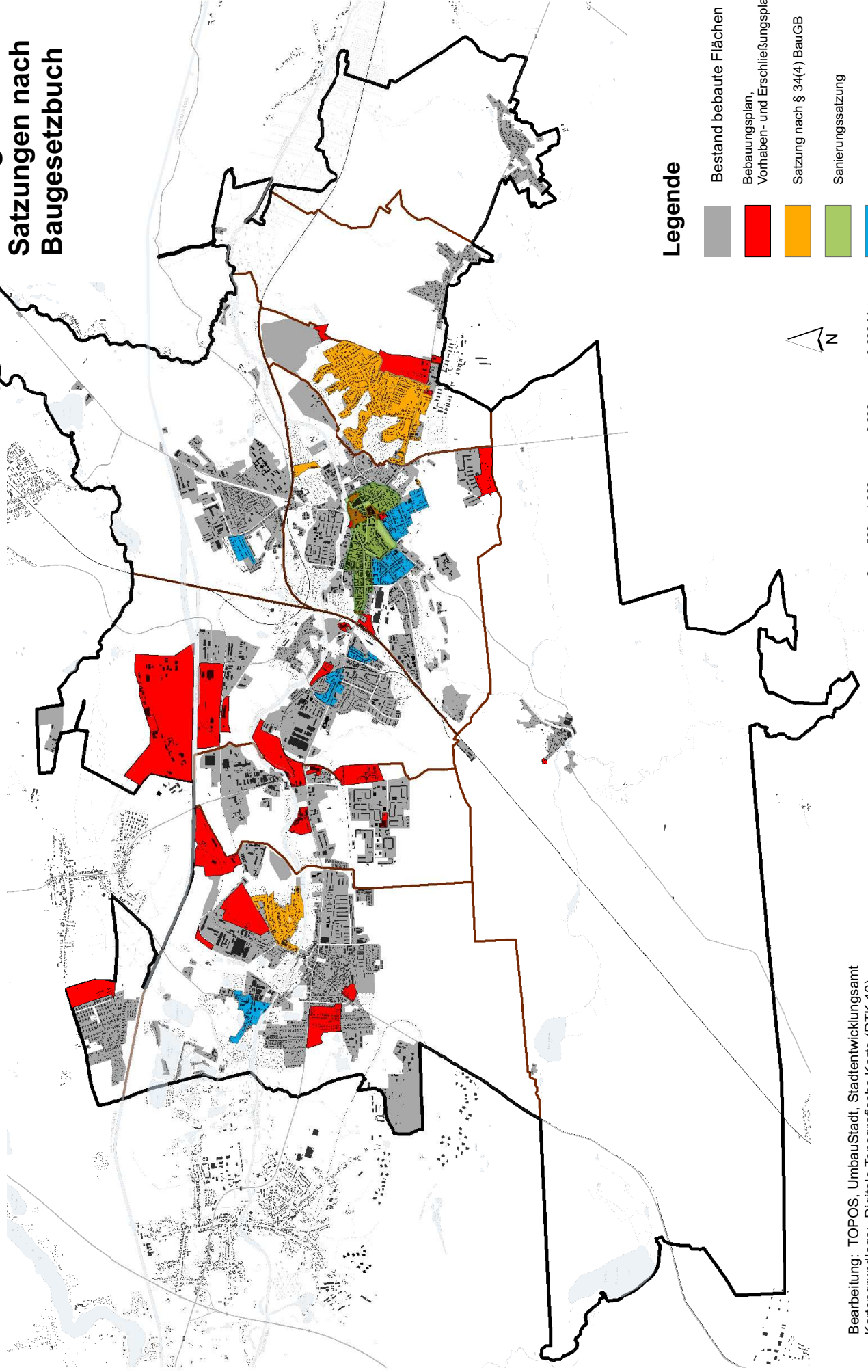
SPECHTHAUSEN
X.1 Spechthausen-West
X.2 Spechthausen-Mitte
X.3 Spechthausen-Ost

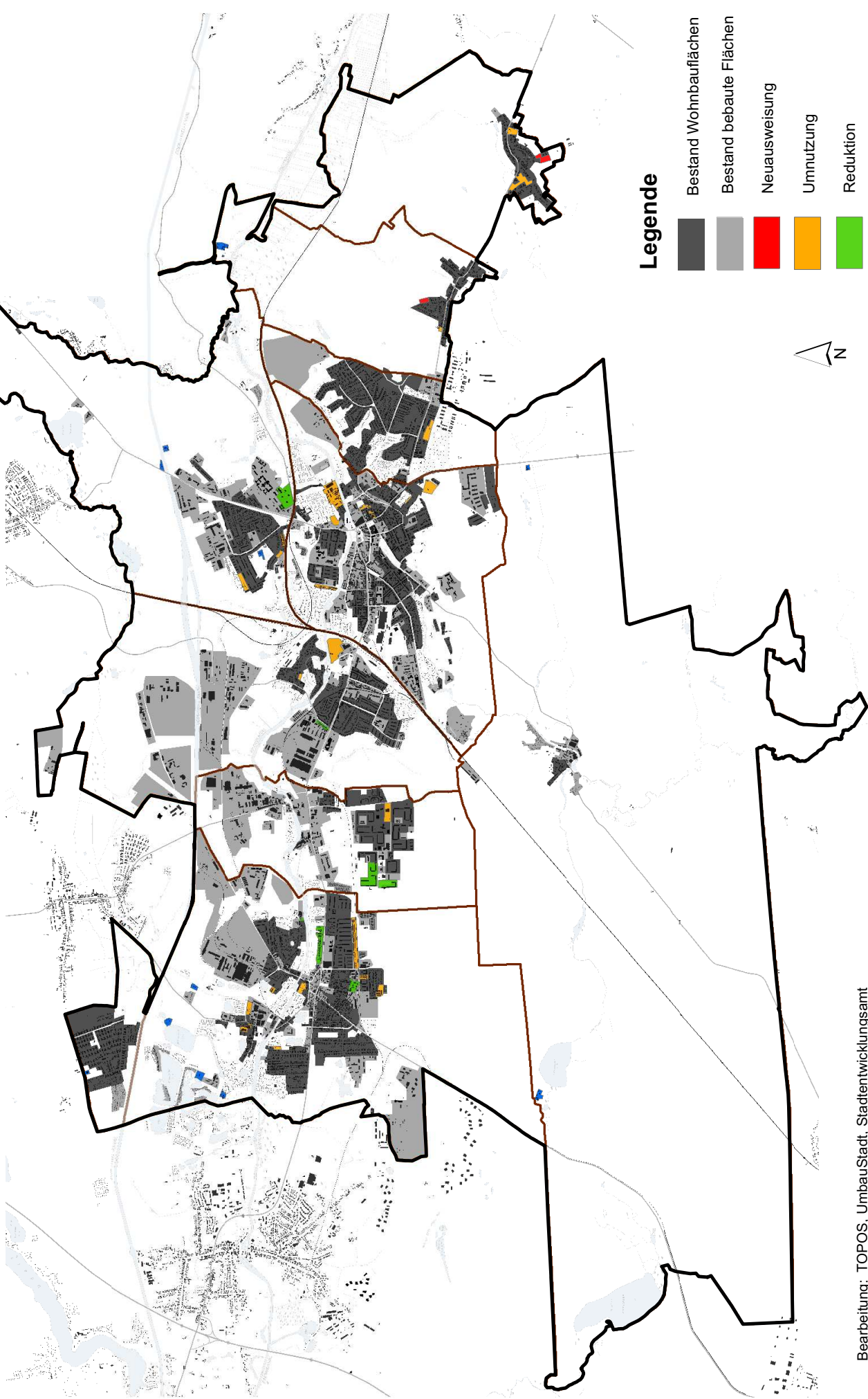
Ortsteile









Legende

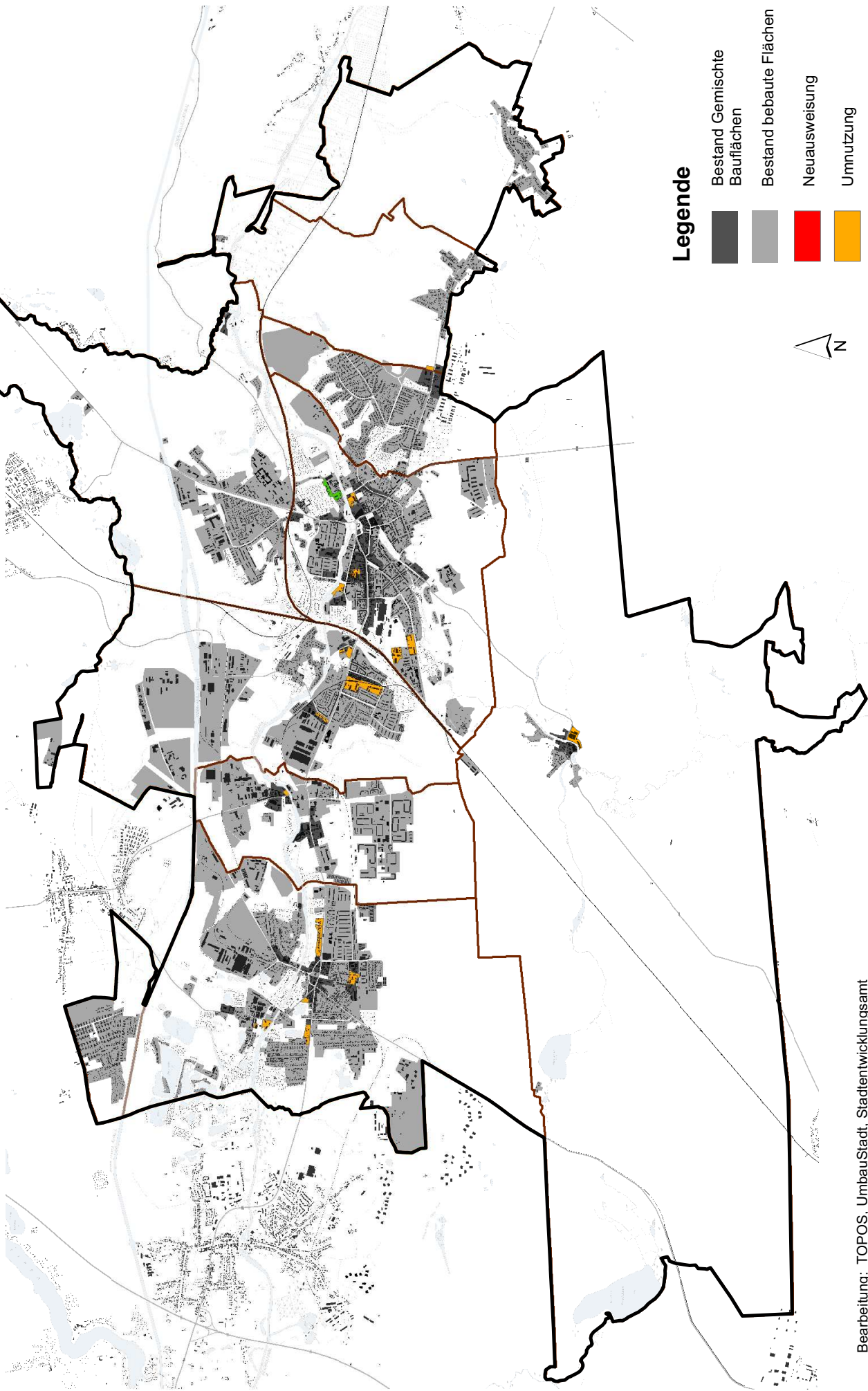











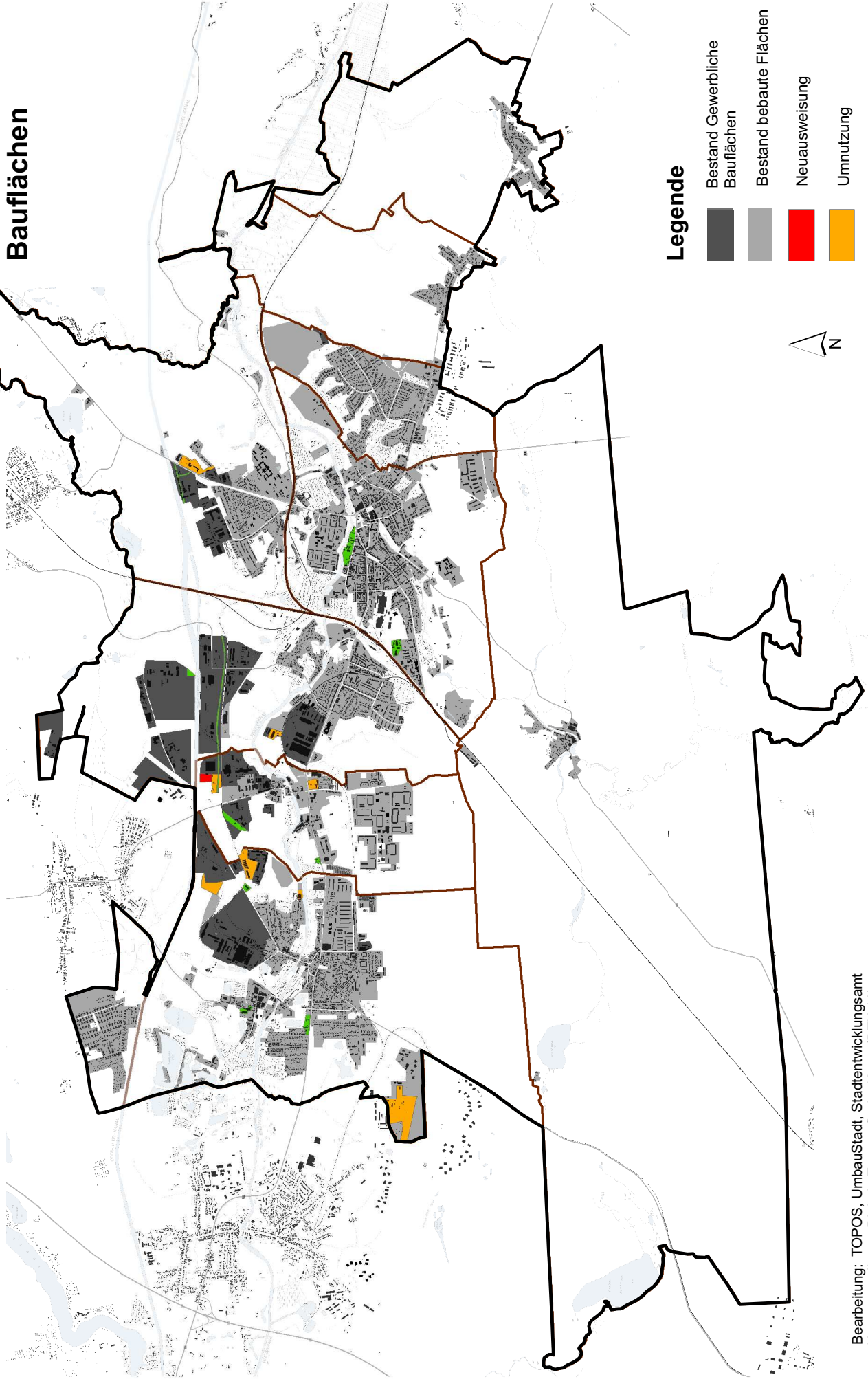
Legende

-  Bestand Wohnbauflächen
-  Bestand bebaute Flächen
-  Neuausweisung
-  Umnutzung
-  Reduktion
-  Splittersiedlung
(keine Plandarstellung)








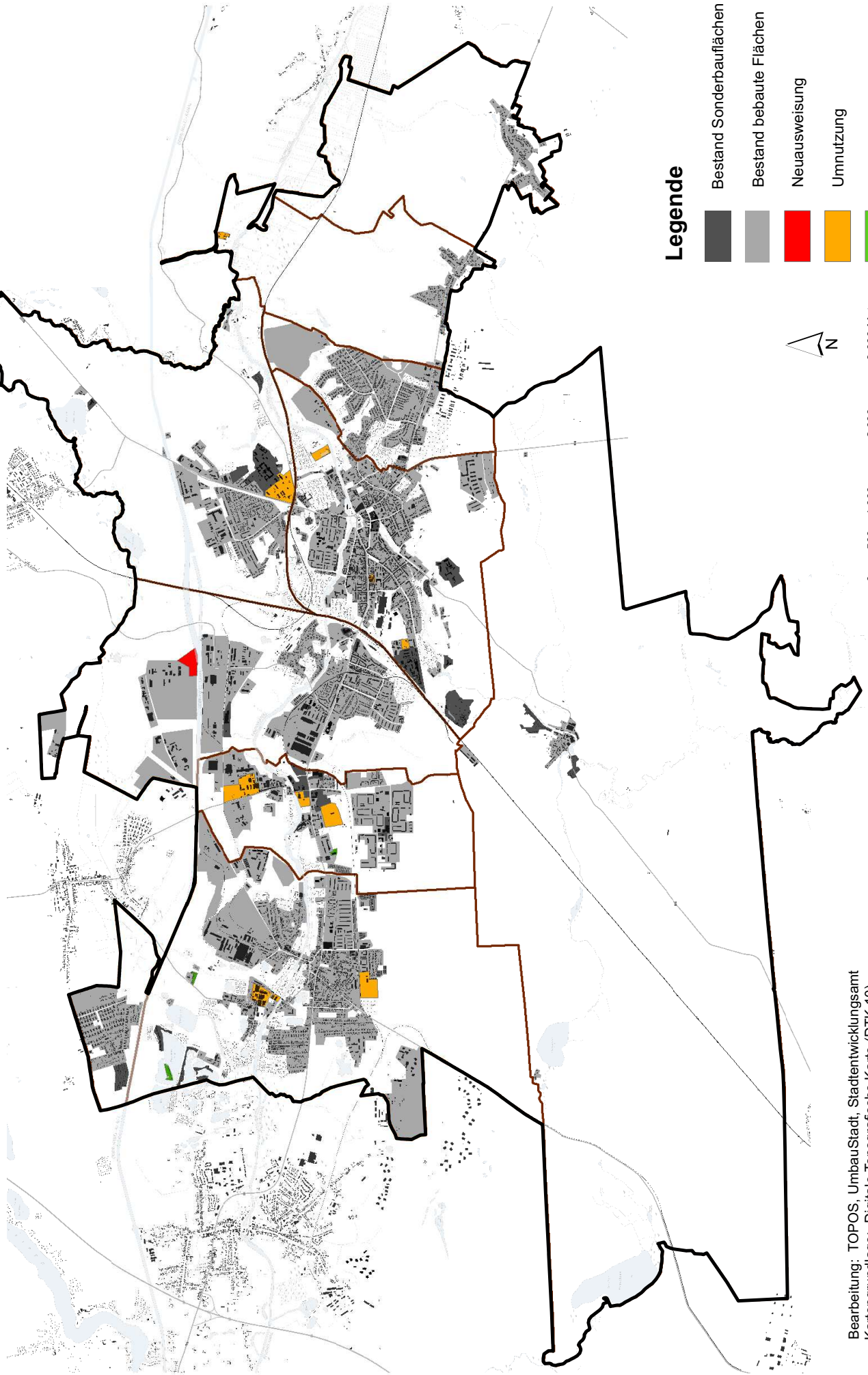
Legende

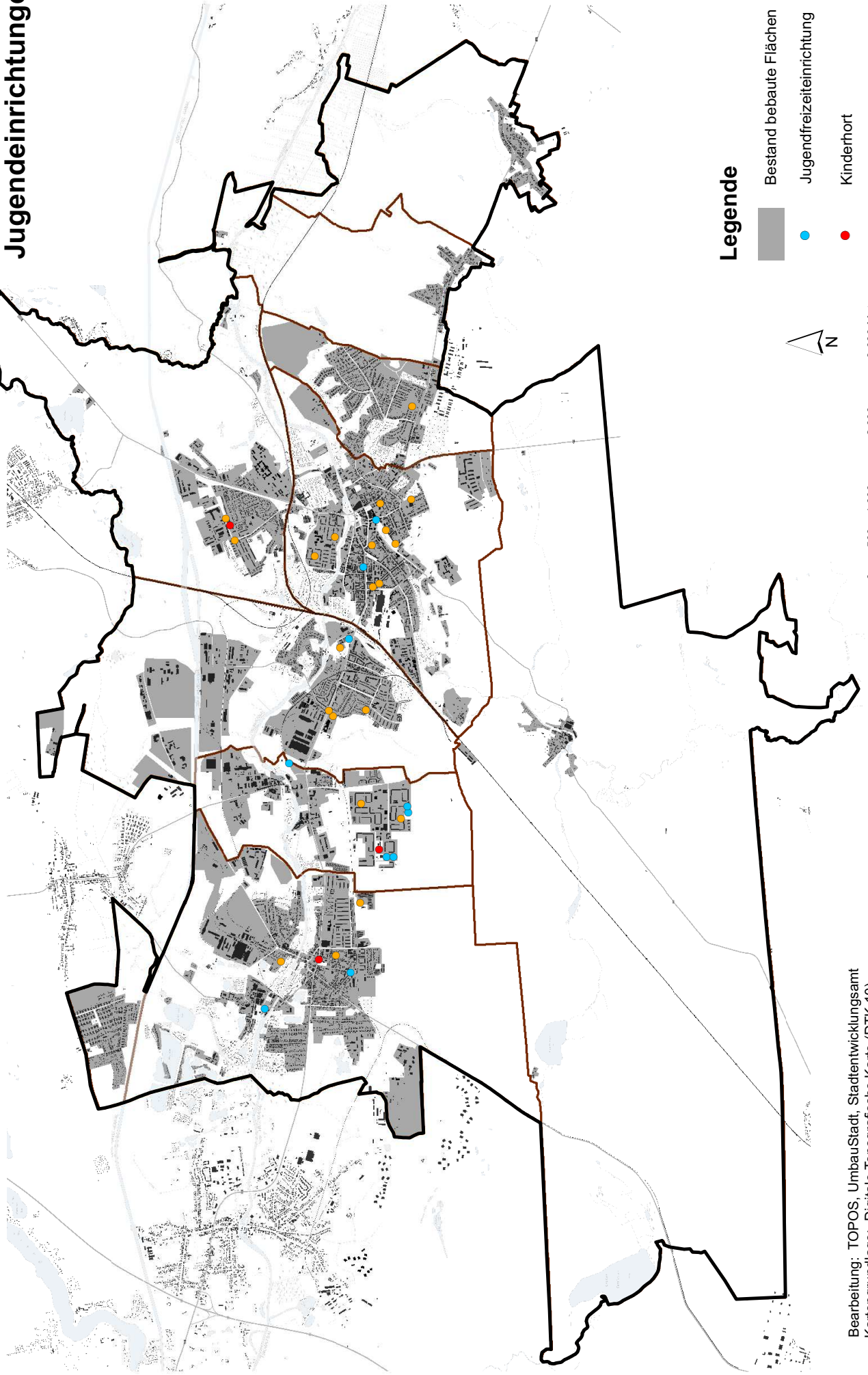
-  Bestand Gemischte Bauflächen
-  Bestand bebaute Flächen
-  Neuausweisung
-  Umnutzung
-  Reduktion







Legende

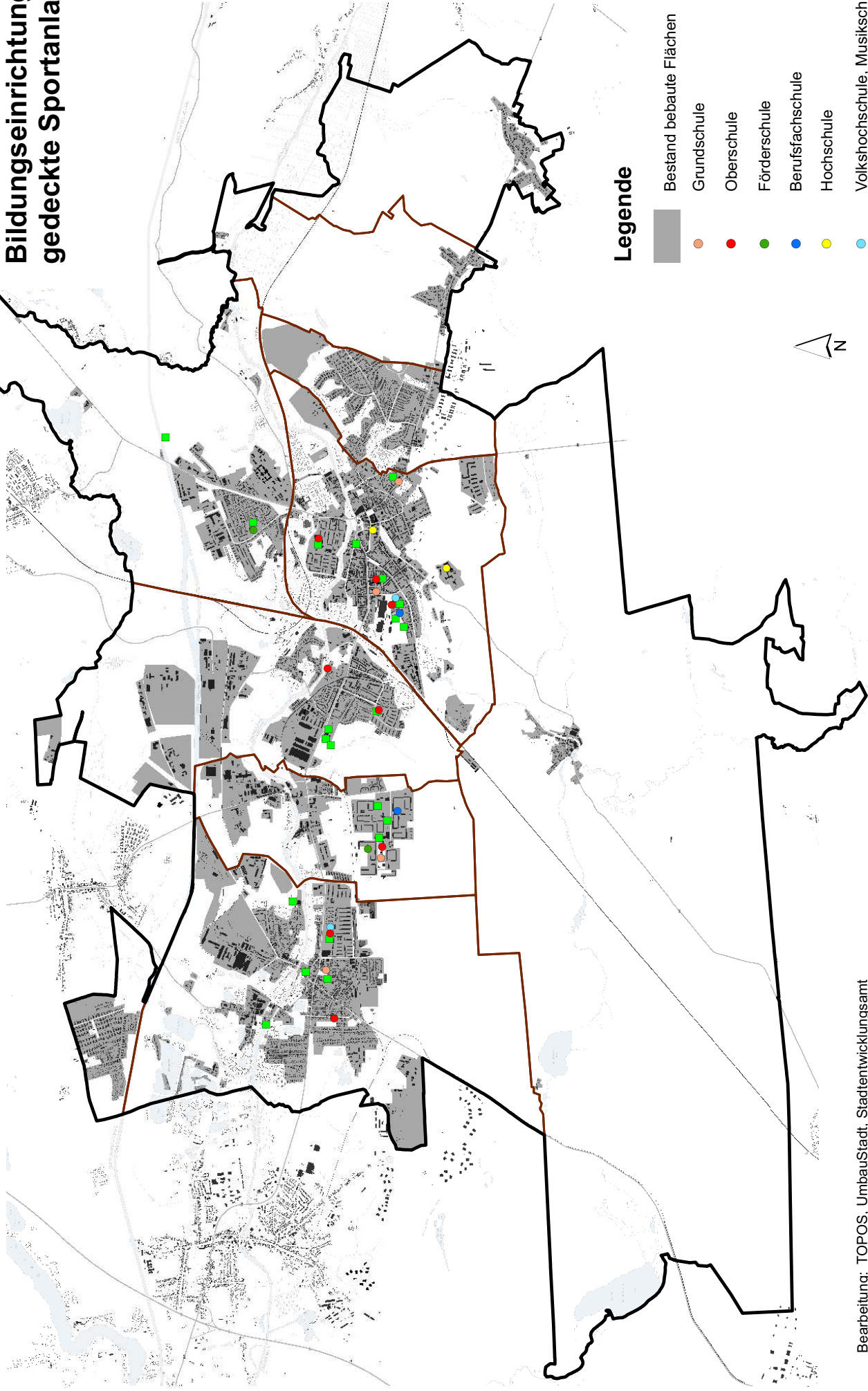
-  Bestand Gewerbliche Bauflächen
-  Bestand bebaute Flächen
-  Neuausweisung
-  Umnutzung
-  Reduktion





Legende

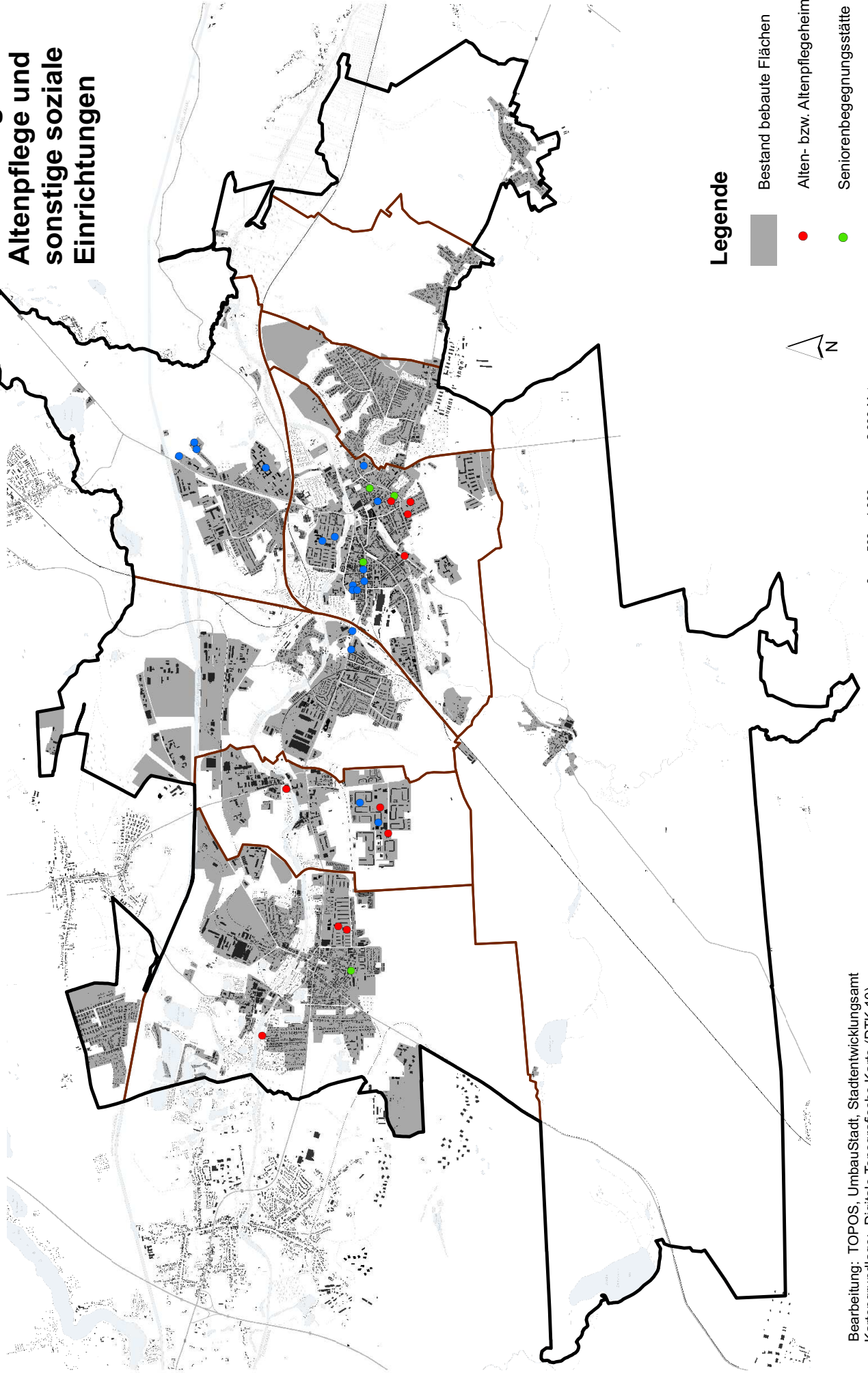
-  Bestand bebaute Flächen
-  Jugendfreizeitanlage
-  Kindergarten
-  Kindertagesstätte



Legende

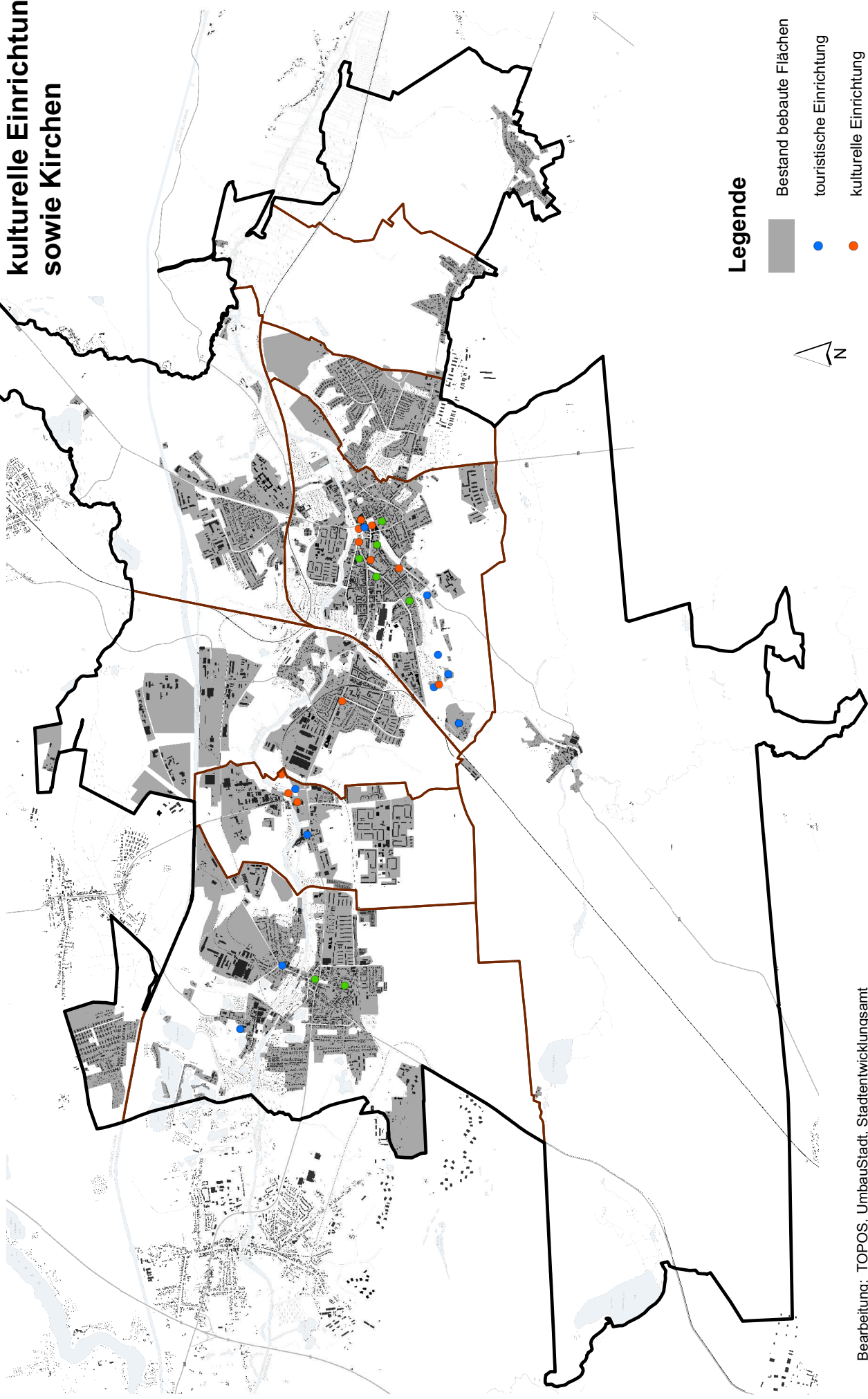
- Bestand bebaute Flächen
- Grundschule
- Oberschule
- Förderschule
- Berufsfachschule
- Hochschule
- Volkshochschule, Musikschule
- gedeckte Sportanlage

Beikarte 9: Einrichtungen der Altenpflege und sonstige soziale Einrichtungen







Legende

- Bestand bebaute Flächen
- Alten- bzw. Altenpflegeheim
- Seniorenbegegnungsstätte
- sonstige soziale Einrichtung

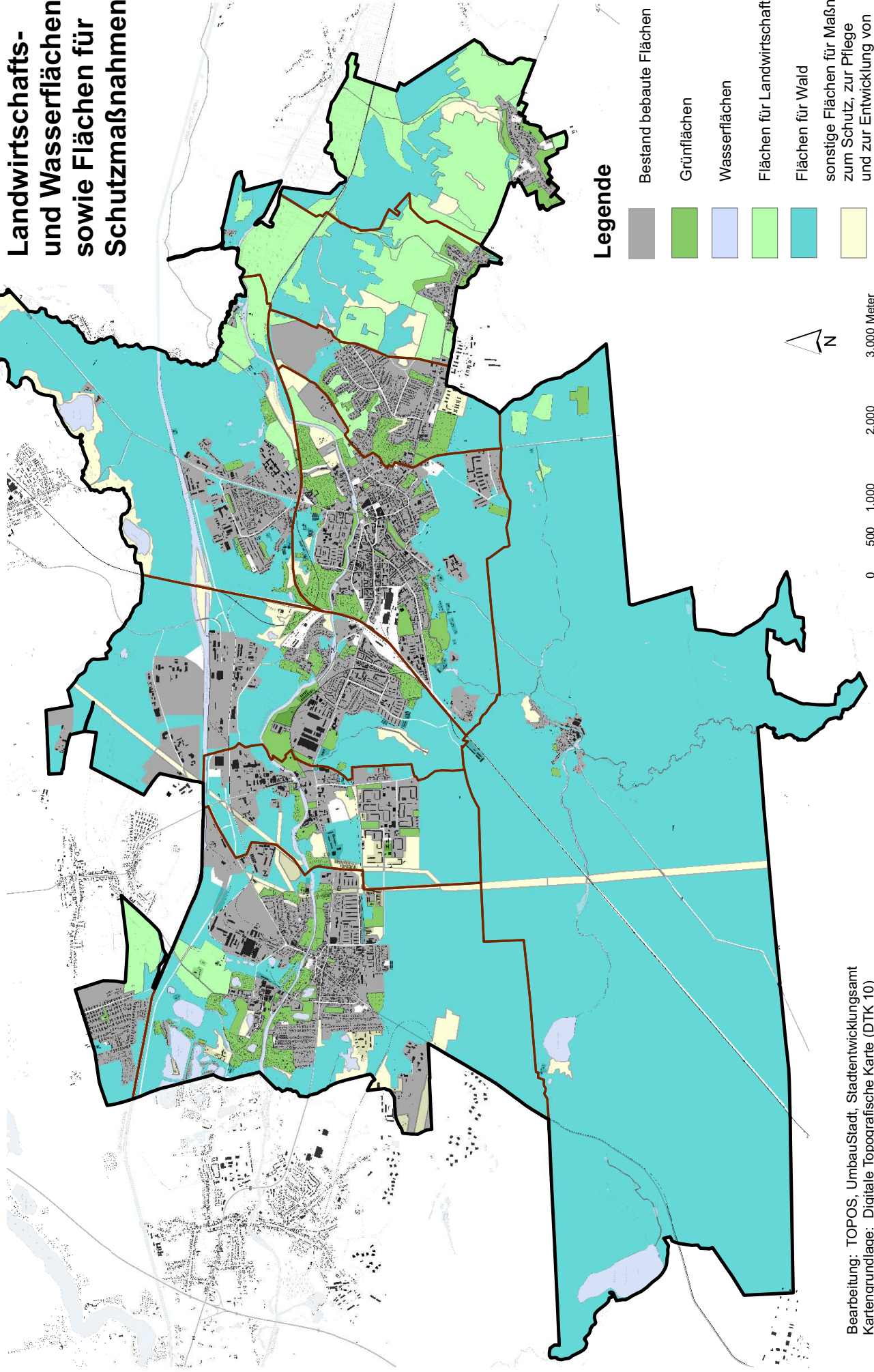


Legende

-  Bestand bebaute Flächen
-  touristische Einrichtung
-  kulturelle Einrichtung
-  Kirche

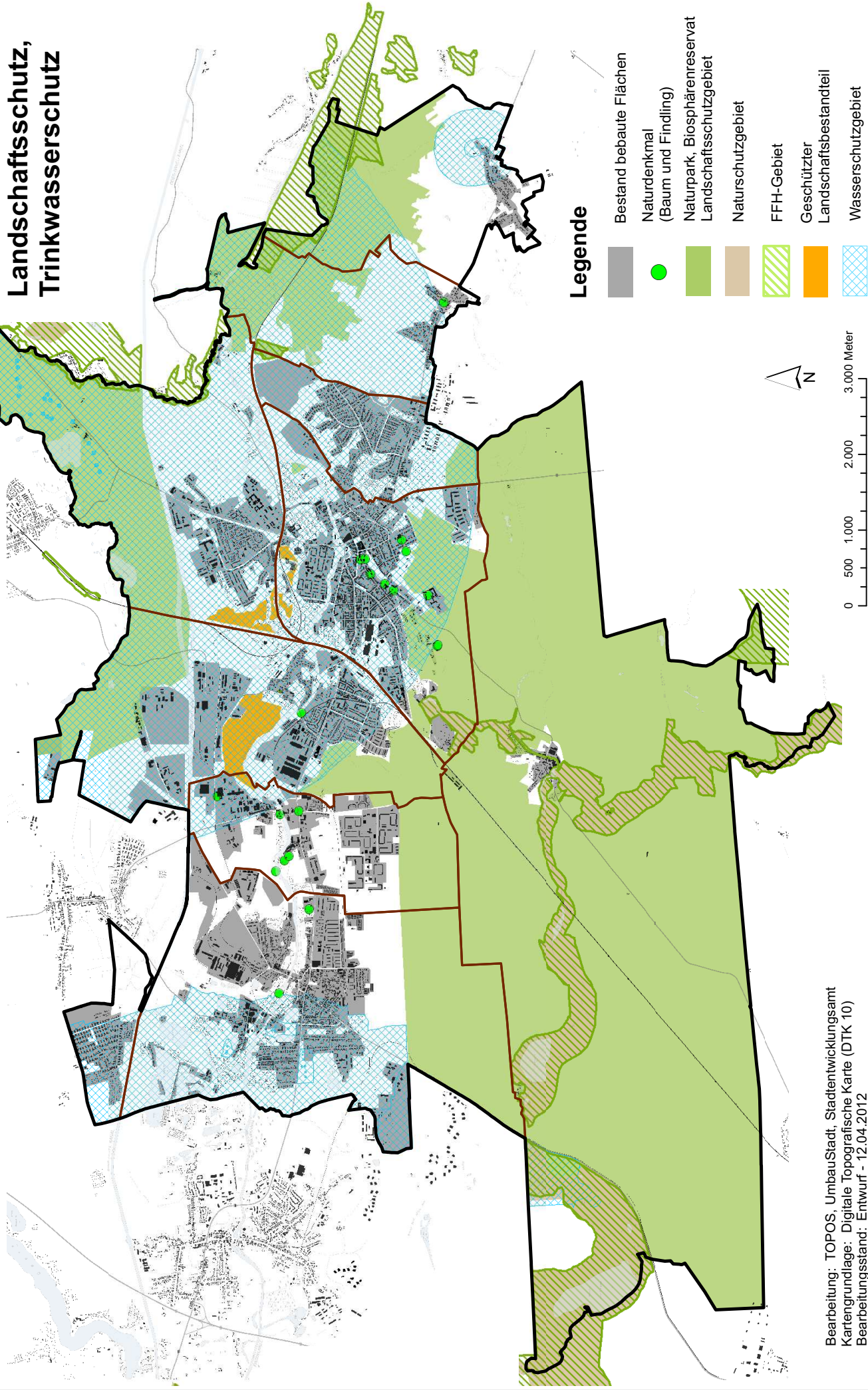
Flächennutzungsplan

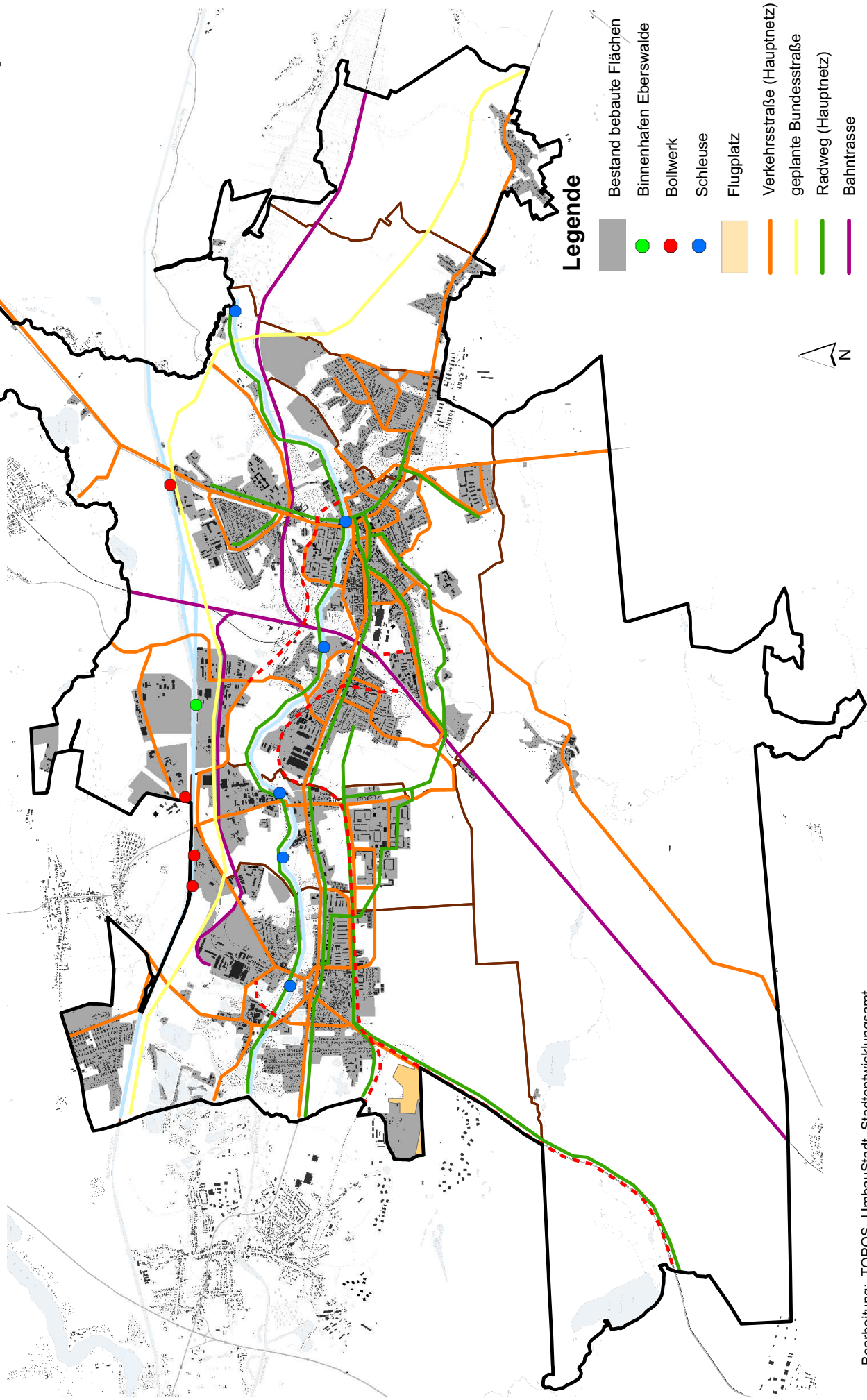
Beikarte 11: Grün-, Wald-, Landwirtschafts- und Wasserflächen sowie Flächen für Schutzmaßnahmen

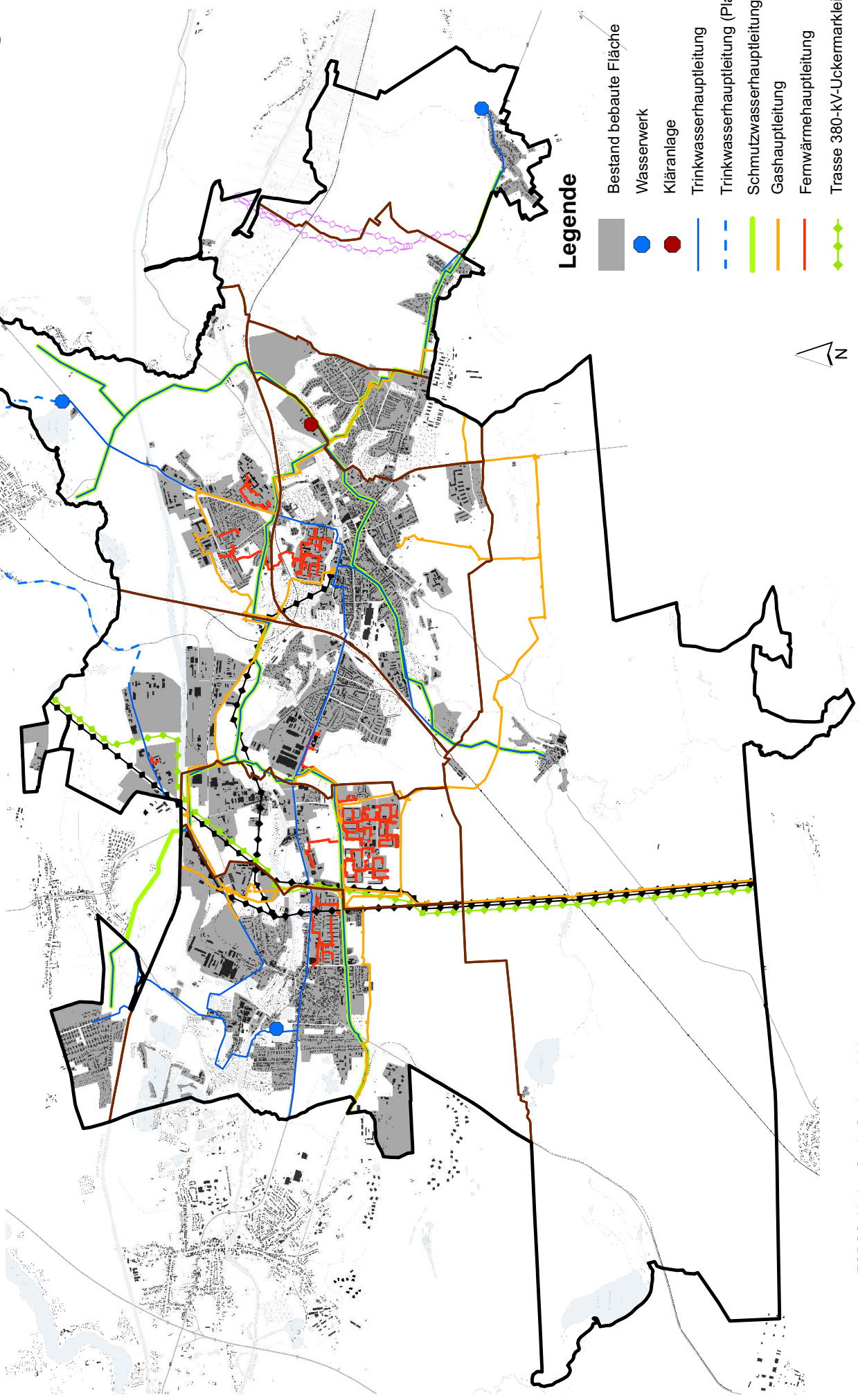


Legende

- Bestand bebaute Flächen
- Grünflächen
- Wasserflächen
- Flächen für Landwirtschaft
- Flächen für Wald
- sonstige Flächen für Maßnahmen zum Schutz, zur Pflege und zur Entwicklung von Natur und Landschaft

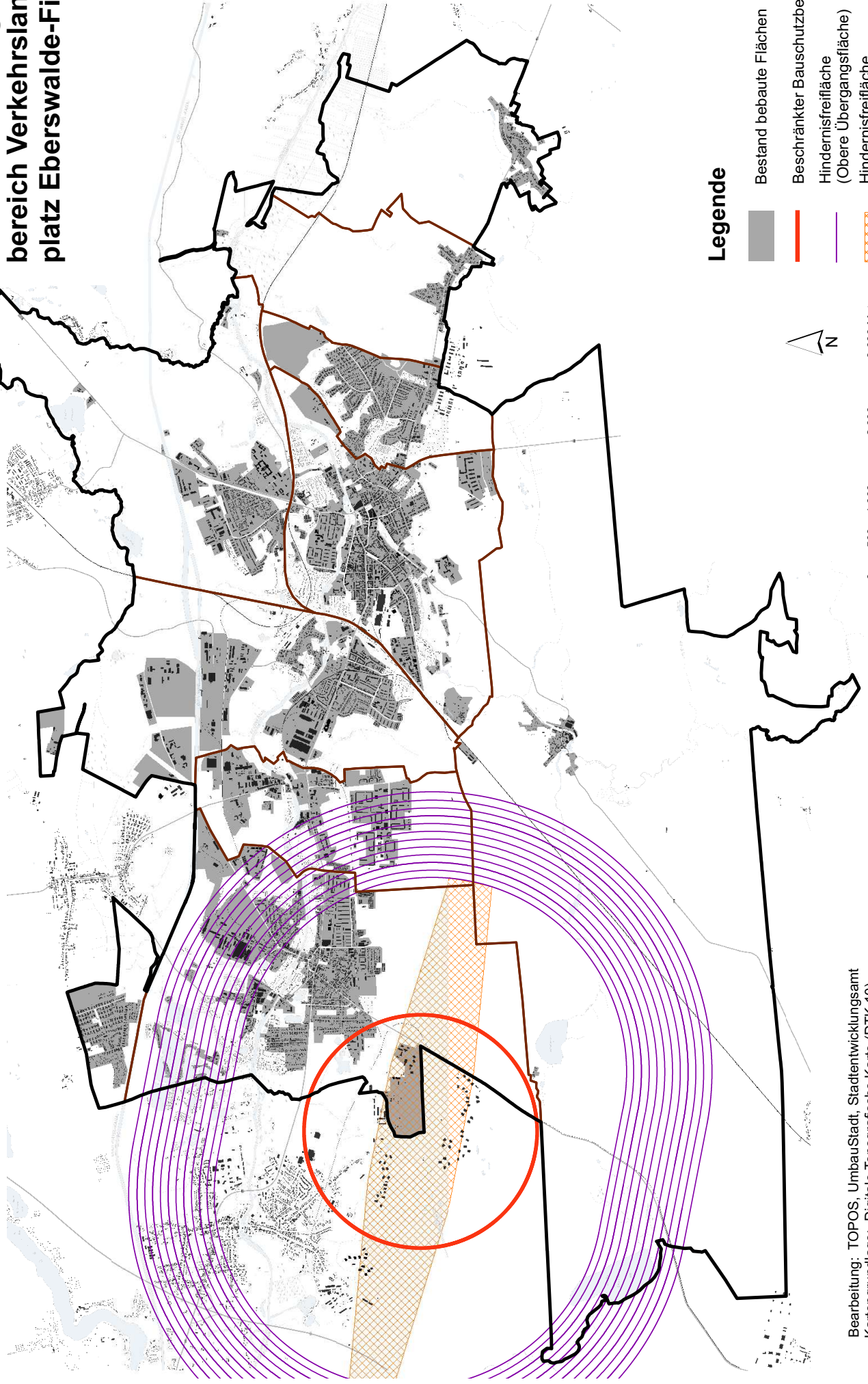


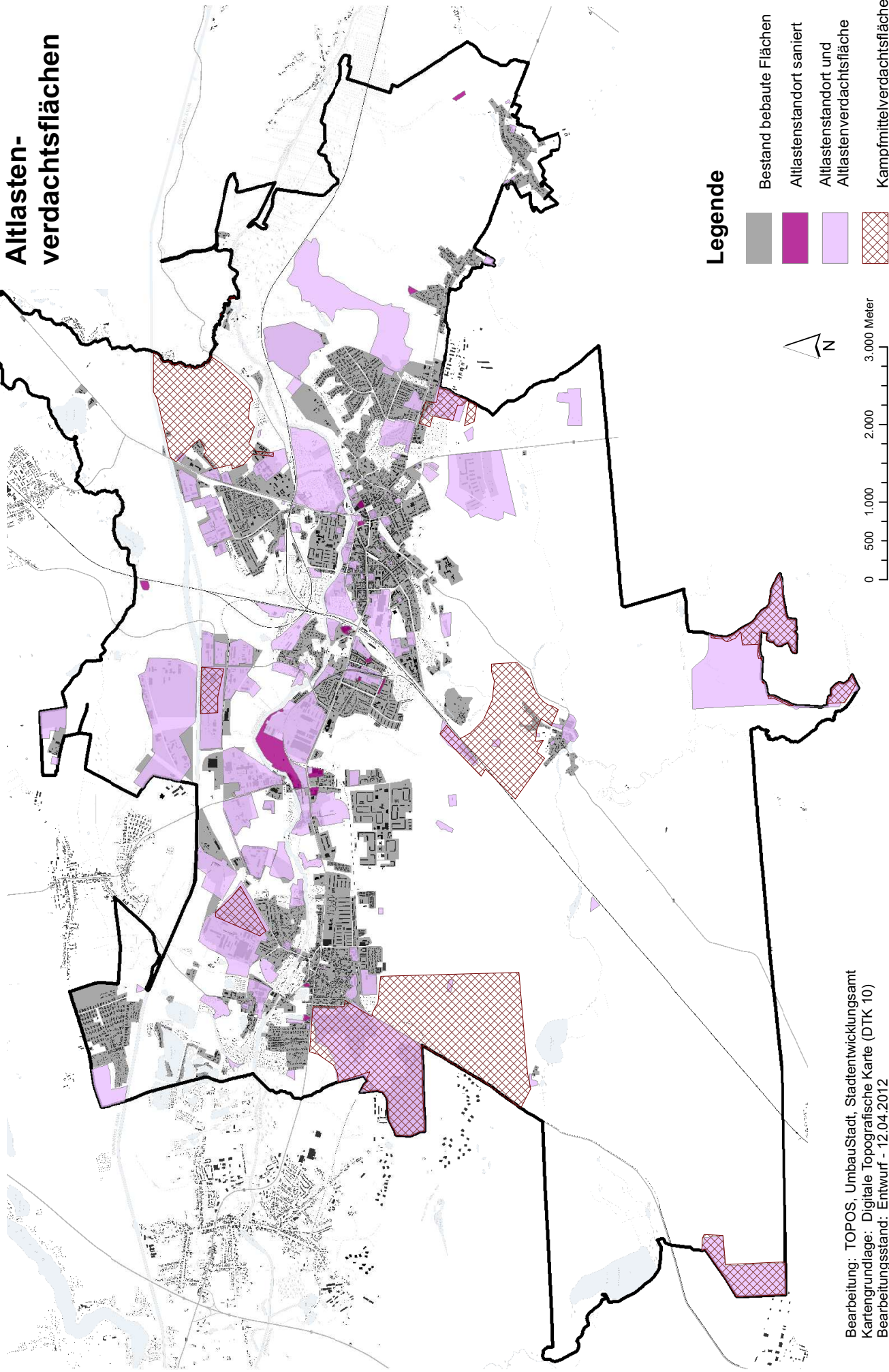


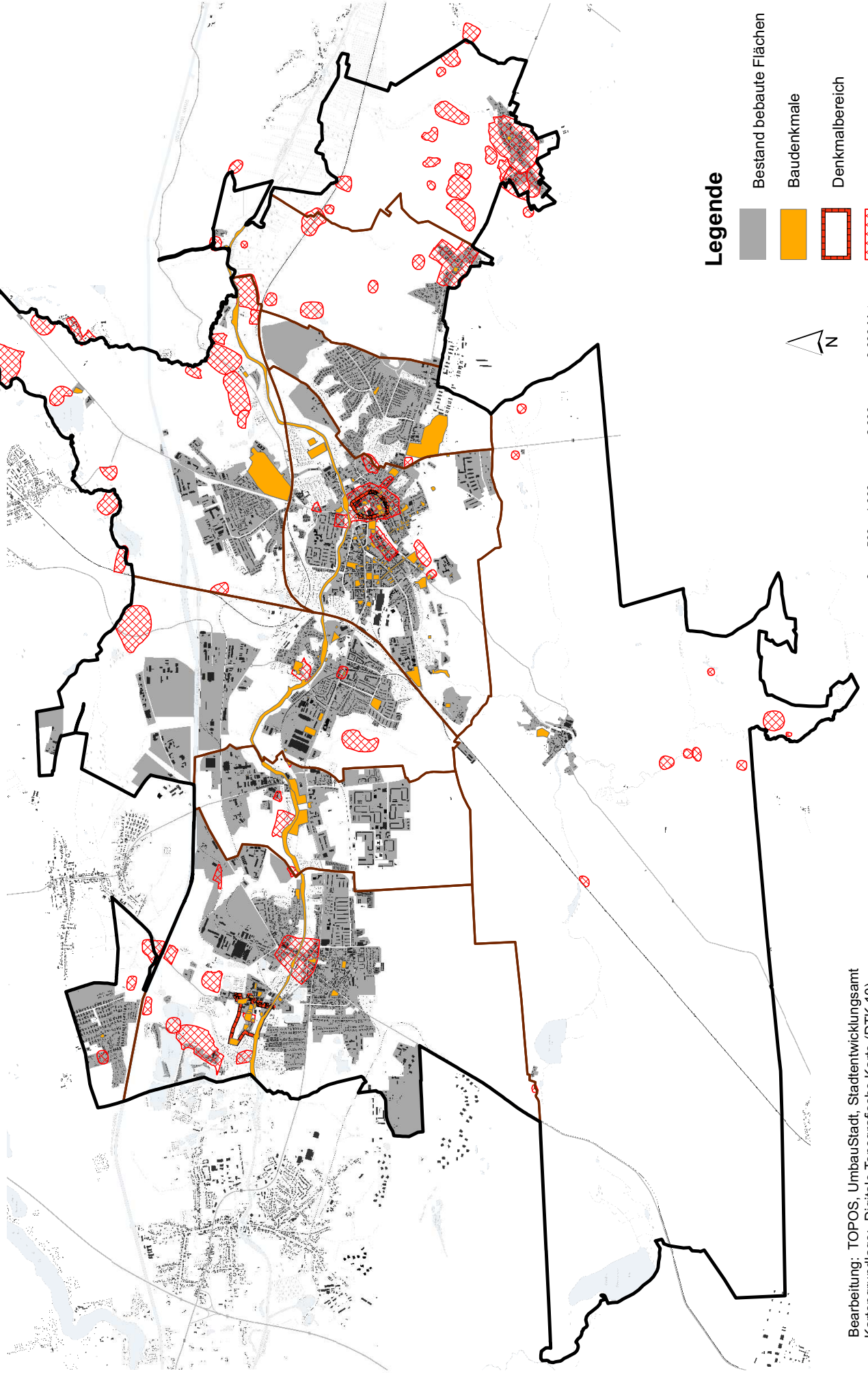


Legende

- Bestand bebaute Fläche
- Wasserwerk
- Kläranlage
- Trinkwasserhauptleitung
- Trinkwasserhauptleitung (Planung)
- Schmutzwasserhauptleitung
- Gashauptleitung
- Fernwärmehauptleitung
- Trasse 380-kV-Uckermarkleitung
- Hochspannungsleitung
- unterirdische Rohrleitung

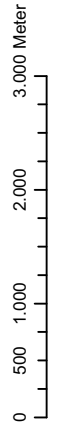


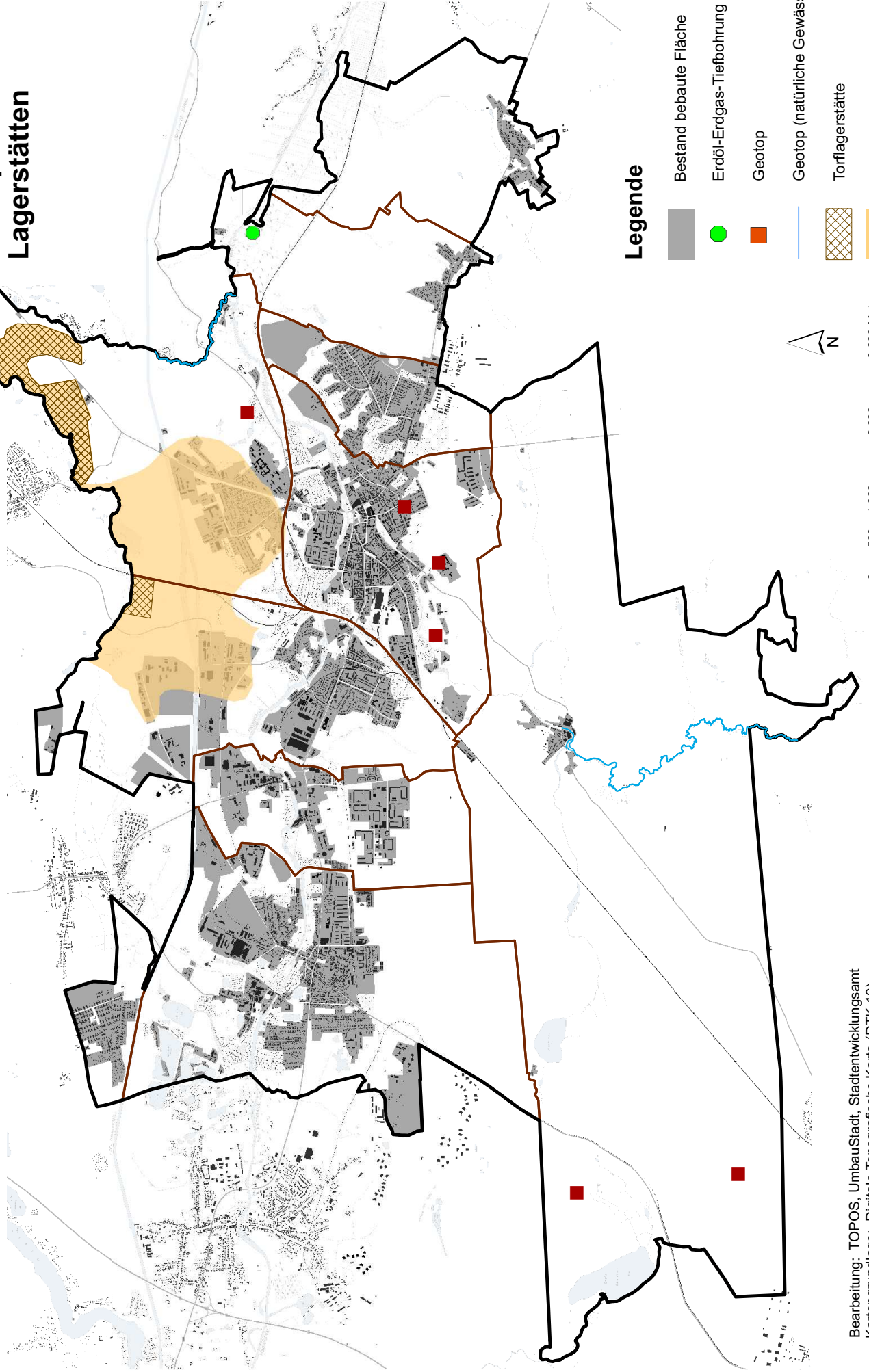










Legende

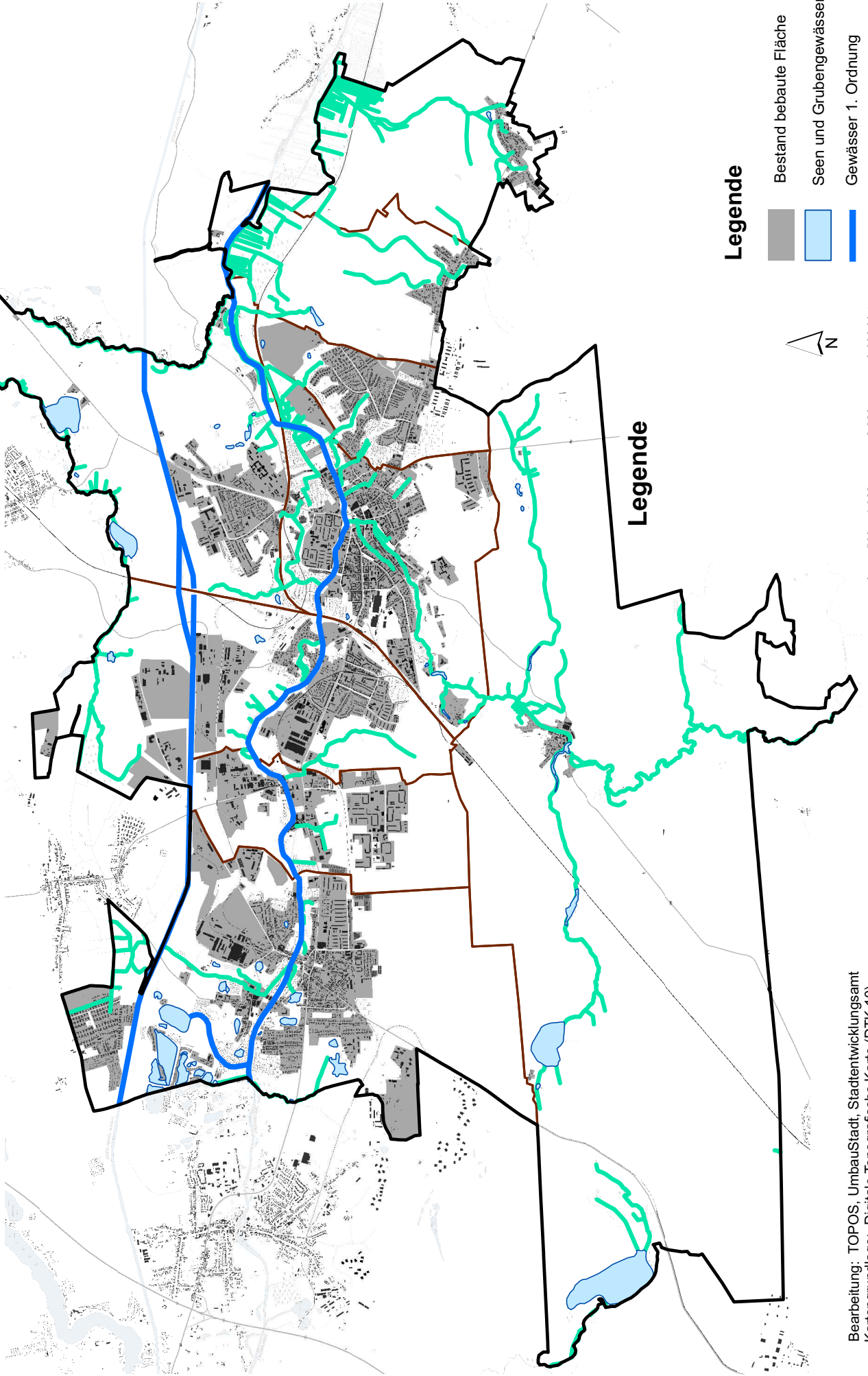
- Bestand bebaute Flächen
- Baudenkmale
- Denkmalbereich
- Bodendenkmale





Legende

-  Bestand bebaute Fläche
-  Erdöl-Erdgas-Tiefbohrung
-  Geotop
-  Geotop (natürliche Gewässer)
-  Torflagerstätte
-  Höflichkeitsgebiet Kies-Sand



Legende

- Bestand bebaute Fläche
- Seen und Grubengewässer
- Gewässer 1. Ordnung
- Gewässer 2. Ordnung

Legende